

Get Involved!

The IRWM planning process is under way now. Become a part of the process, contribute to integrated water management in the Sierra Nevada, and ensure your agency goals and projects are represented!

Ways to stay informed and be involved:

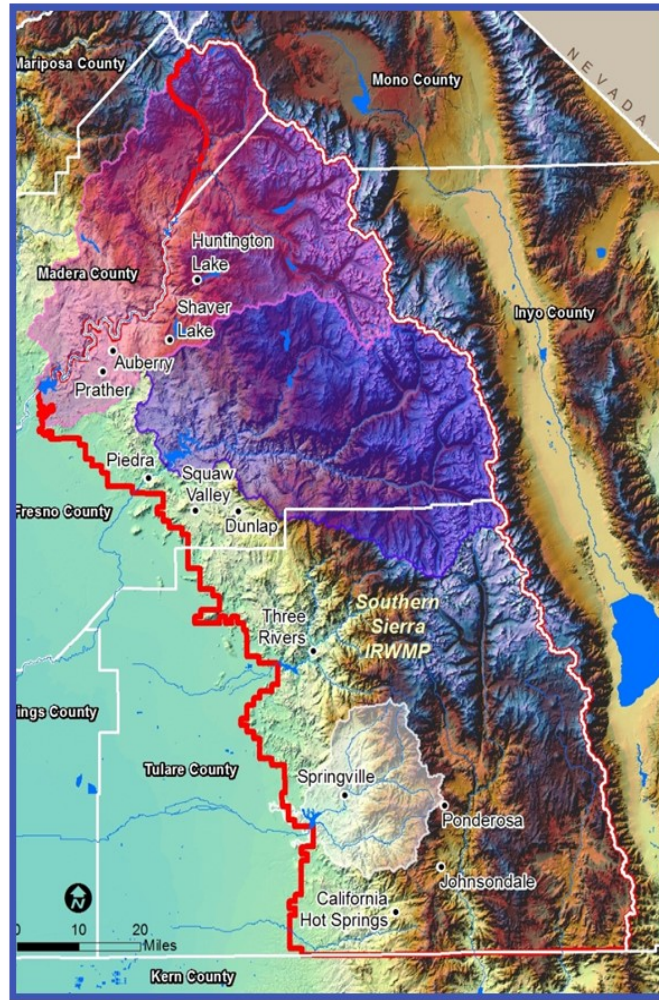
1. Attend Regional Water Management Group Meetings. The group meets on a bi-monthly basis in 2014;
2. Have your organization review and sign the Memorandum of Understanding which guides the process and ensures broad stakeholder involvement;
3. Submit projects and project ideas to the group for integration, development and potential funding;
4. Help write a grant, fund a project or assist with reaching other organizations with interests in water management;
5. Lend you or your agency's expertise!

Contact:

Chris Moi, Project Manager,
Sequoia Riverlands Trust
(559) 738-0211
chris@sequoiariverlands.org

Visit www.southernsierraRWMG.org for more information and to view a calendar of upcoming meetings and events.

The Southern Sierra RWMG Region



Southern Sierra RWMG:

427 Garden Street
Visalia, California 93277
Phone: (559) 738-0211
Fax: (559) 624-5555
E-mail: chris@sequoiariverlands.org

SOUTHERN SIERRA

REGIONAL WATER MANAGEMENT GROUP

Collaborating for Science-
based Integrated Regional
Water Management in
California's Southern Sierra



An Integrated Approach to Regional Water Management

The Southern Sierra Regional Water Management Group (RWMG) is a voluntary collaboration of nonprofits, government agencies, and landowners committed to creating better water management outcomes for the Southern Sierra region – from the headwaters of the San Joaquin River south to the source of the Kern River, from the grand peaks of the Sierra Nevada east to the Valley foothills. The Southern Sierra RWMG is recognized by the state of California as an Integrated Regional Water Management (IRWM) group that has the authority to apply for project planning and implementation grants. As a group, they:

- Utilize sound science, best available data, and local knowledge to inform project decisions
- Foster a broad, long-term approach to increasing regional self-sufficiency and sustainable resource management
- Promote broad public engagement, coordination, and collaboration to leverage benefits across the region and reduces costs.

What is an Integrated Regional Water Management Plan (IRWMP)?

An IRWM Plan is a region-wide, voluntary planning document that identifies broadly supported, multiple-benefit water resource projects and programs. It is:

- Non-regulatory
- Collaborative
- Non-binding
- Consensus-based
- Generates multiple-benefit projects
- Integrates land use and water planning

An IRWM Plan is developed regionally and includes input from many diverse, local stakeholders. It investigates a broad spectrum of water resource issues, including water supply, flood and stormwater management, water quality, environmental ecosystem protection and restoration, recreation, land use and stakeholder involvement.

IRWM Plans integrate a variety of water management strategies to solve multiple challenges. IRWM Plans can attract state and other funding to support regional projects.

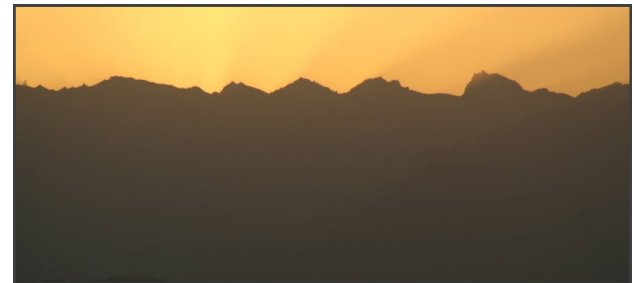
Proposition 84, approved by California voters in 2006, allocated \$1,000,000,000 in funds for IRWM planning and the water-related project implementation. The IRWM program is entering into its third and final project implementation grant cycle.

Southern Sierra Regional Water Management Successes

The Southern Sierra IRWM planning effort began in 2008 when the Sierra Nevada Conservancy awarded Sequoia Riverlands Trust (SRT) \$50,000 to identify stakeholders and organize public meetings.

After successfully forming the SS RWMG, SRT received \$50,000 in facilitation support funds from DWR in 2010 and 2012 to continue engaging stakeholders in the IRWM process. In 2012, the SS RWMG applied for and received \$520,000 to write its IRWMP.

In 2013, the SS RWMG submitted applications to implement three projects, of which two have been funded. The National Fish and Wildlife Foundation will fund the Long Meadow Restoration Project and DWR will conduct a hydrologic capacity study for the town of Three Rivers.



The SS RWMG is currently in the process of developing its IRWMP with support from Provost & Pritchard Consulting Group. The group is also considering projects to submit for funding through Round 3 of the IRWM grant cycle. Proposals are due in the fall of 2014.